

MJS-XMD2

USB PC Interface for XM Direct 2™

(CNP2000UC)

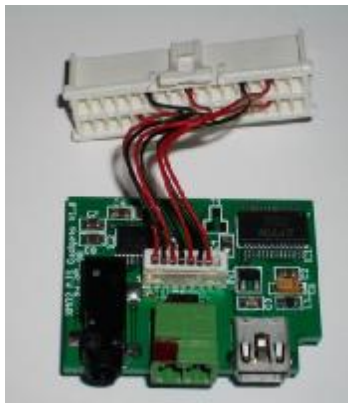
Installation Instructions

DISCLAIMERS:

- *This product is not affiliated with XM™ Satellite Radio in any way.*
- *There are no warranties expressed or implied by purchase of this product.*
- *All boards are tested and verified 100% before shipping.*
- *While every care has been taken to provide a quality product, we cannot guarantee the board to function correctly if installation is not done according to the instructions in this guide.*
- *We are not liable for misuse of this product. Misuse includes improper installation, damage to the board or radio while trying to install, and illegal use of the modified radio.*

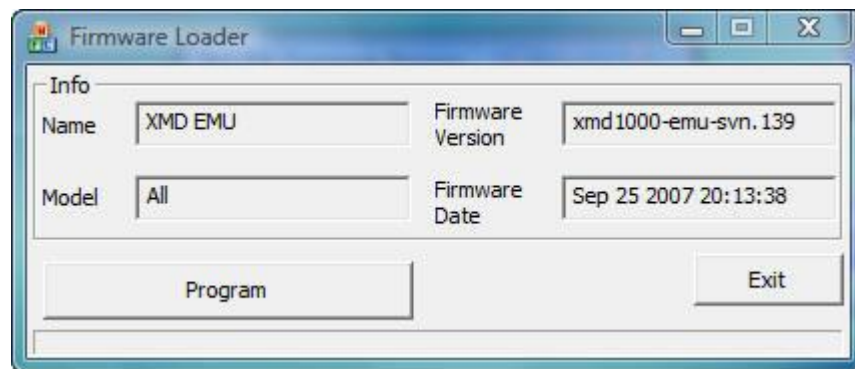
ITEMS INCLUDED:

1. USB Interface circuit board.
2. 2 Pin captive wire connector for 12VDC (fused @ 1 amp).
3. 6 foot A to Mini B USB cable.
4. 6 foot 3.5mm male to male stereo audio cable.
5. Mini-CD with USB Drivers and free software.



Step 1 – Programming the firmware.

- Install the CNP2000UC firmware software, which is available at <http://www.audiovox.com/webapp/wcs/stores/servlet/xmdirect2.html>
- Plug in the CNP2000UC to your pc's usb port. The drivers need to be installed, http://www.audiovox.com/webapp/wcs/stores/servlet/devicedriver_instructions.html
- **Program the CNP2000UC with "JENSEN HD5112" firmware.**
- *Tech Tip* - run "usbprog.exe" in the "C:\Program Files\XM Direct 2" directory and select the firmware, or direct file pick from "C:\Program Files\XM Direct 2\HEADUNITS\JENSEN" the "HD5112.xuf" file.



Once firmware is programmed, disconnect from pc.

Step 2 – Installing the USB interface.

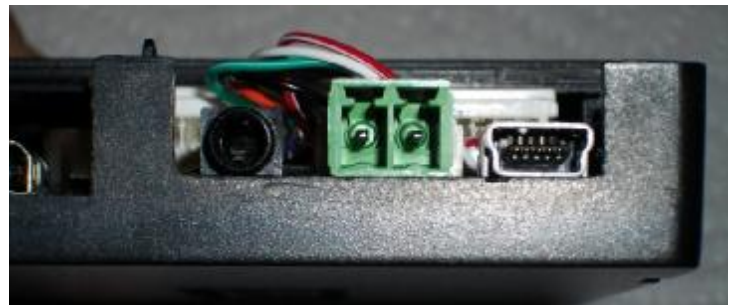
- Plug in large white connector to the CNP2000UC.



- Peel off paper on double sided tape.



- Place board into location, it's a good fit, hard to make mistake here, don't press down too hard, until position is correct. Press firmly to secure tape.



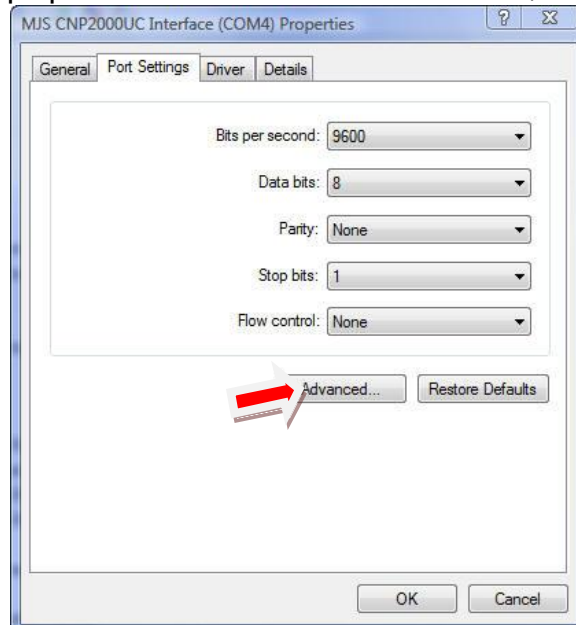
Note how connectors sit on lip of plastic...

Step 3 – Connecting the USB interface to PC.

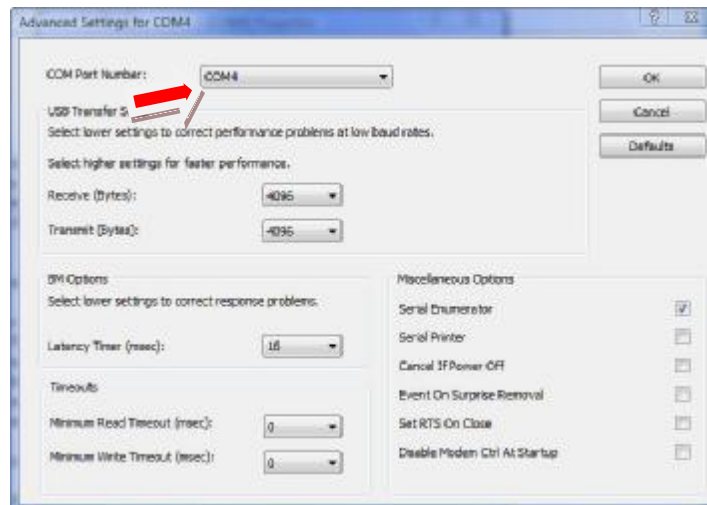
- Connect USB cable to mini usb jack, and to your PC. Windows will detect and request drivers for newly connected device. This interface acts as a standard COM Port, it is FTDI chipset based. The driver install is 2 parts, the USB Device, and then the virtual COM port. When prompted, use the drivers found on the supplied CD.
- Now very important, once both drivers are install, confirm NO port conflicts. (Not sure why It happens, but it

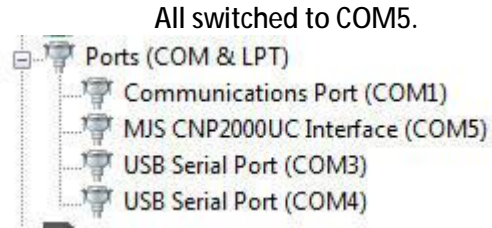


To resolve conflict, select properties of the MJS CNP2000UC Interface, then on the Port Settings tab.



Click on Advanced, and change the com port to an unused port.

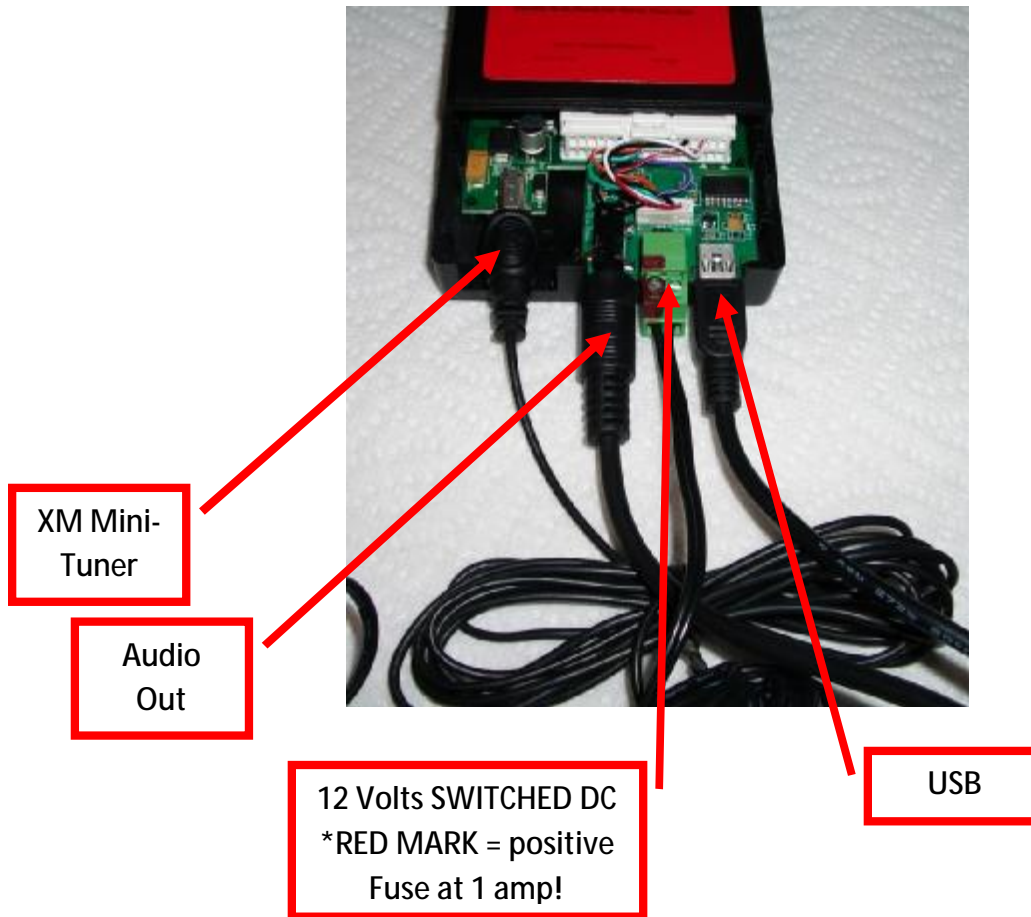




REBOOT THE PC!!

(Even though it looks like it took)

Step 4 – The rest of the jacks.



**When connecting in an automotive environment,
fuse the 12 volt dc at 1 amp! Connect to a switched power, not constant 12V
When power of the PC is controlled by ignition switch, XMD2's power should be ON when the PC is
ON. Recommended connection is 12v from the PC's power supply (hard drive connector).**

Step 5 – Testing it out.

Run the program MJS Gadgets XM Demo V1.1.x
(*must be version 1.1 or greater*).



If the radio isn't found:

Got power? Wall adaptor plugged in?
Got Mini-Tuner in cradle? Is it connected?
USB Drivers installed correctly? Look in device manager
under ports.
Did you forget to reboot, if you switched comport
numbers?

Thanks for you purchase and support of MJS Gadgets.

-Mitch